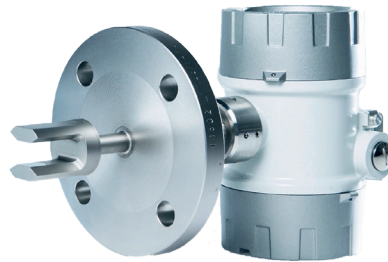
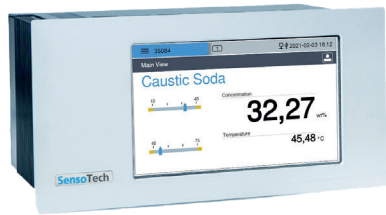


# Incoming Good control

## Automated control of received liquids



NaOH, H<sub>2</sub>SO<sub>4</sub>, HNO<sub>3</sub>,  
HCl, NaOCl...



Plug & Play  
System



Automated Data  
storage

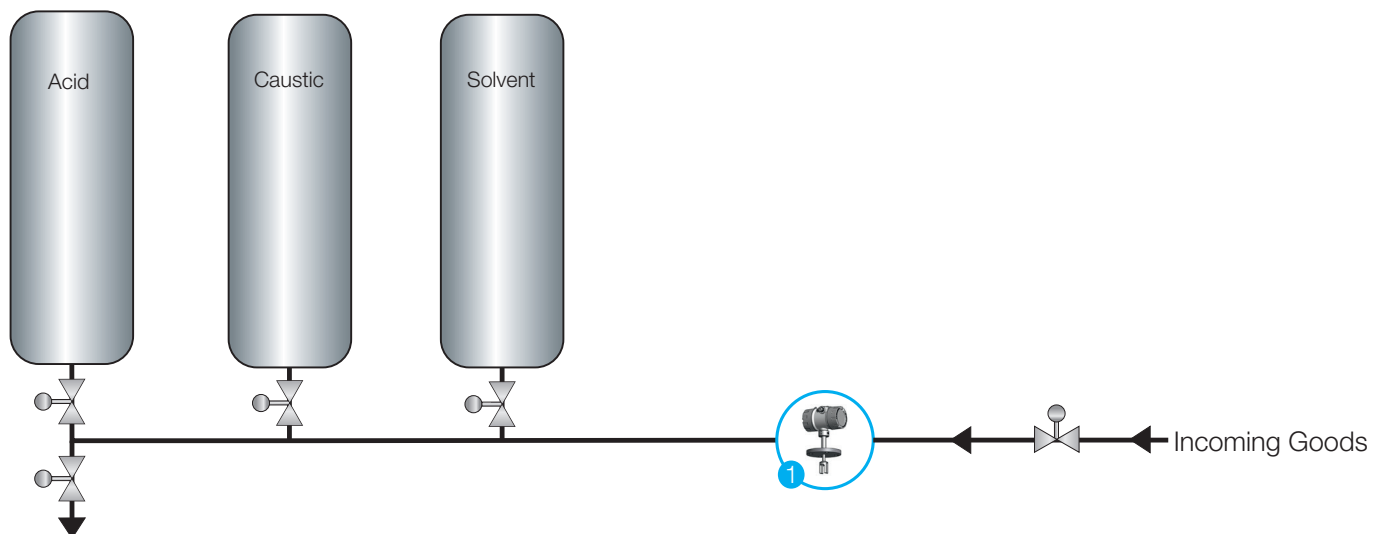


Fast response  
times

In chemical plants where the storage and synthesis of explosive chemicals is routine, careful handling is critical. The chemical industry faces significant risks if materials are not handled properly. A critical risk factor in this industry is the mishandling of chemicals, particularly when exothermic reactions are triggered by improper procedures, such as the accidental introduction of acids into caustic tanks. Ensuring accurate identification

and control of these substances is critical to maintaining safety and regulatory compliance.

LiquiSonic® provides fast and highly accurate identification of incoming goods. Its automated data storage capabilities further enhance compliance with stringent quality control standards, ensuring both safety and efficiency in chemical processing environments.

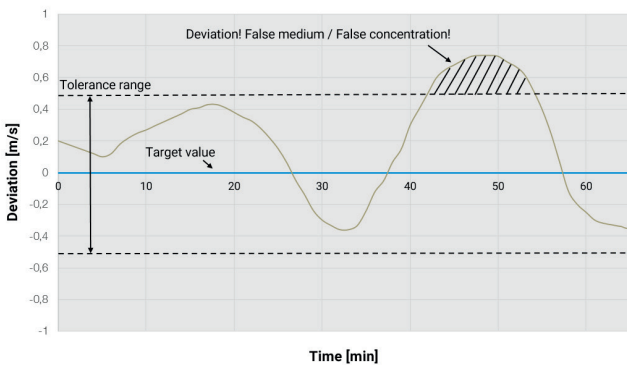


1 Monitoring of the Incoming Goods Concentration

# Incoming Good control

## Eliminate Dangerous Sampling and Skip the Lab with Inline Measurements

### LiquiSonic® sonic velocity measurement in Incoming Goods



### Customer value

The inline measuring with LiquiSonic® enables an exact analysis of raw materials by measuring the sonic velocity of incoming liquids. This ensures a stable product quality and increases the plant safety. A expensive and time-consuming analysis of samples in the lab is not necessary anymore.

The robust construction of the LiquiSonic® sensor without moving parts or gaskets guarantees a long-term reliable analysis and monitoring of incoming liquids. If required the medium contact materials can be made of special material like Hastelloy C2000 for example.

Other advantages for users are:

- Raw material analysis within seconds
- Monitoring of raw material delivery
- Also for explosion hazardous areas available
- No contaminations in raw material tanks because of incorrect filling
- Prevention of plant corrosion
- Increased plant safety and minimizing the error potential and the risk for the operators

### Installation

The LiquiSonic® immersion sensor can be installed directly on the pipe of the raw material delivery.

The place of installation has to be selected in a part of the pipe where the sensor is fully in contact with the measuring liquid. Recommended is the installation in a rising pipe or in the bottom of partially filled pipes. The tight sensor construction enables a long lifetime of the system.

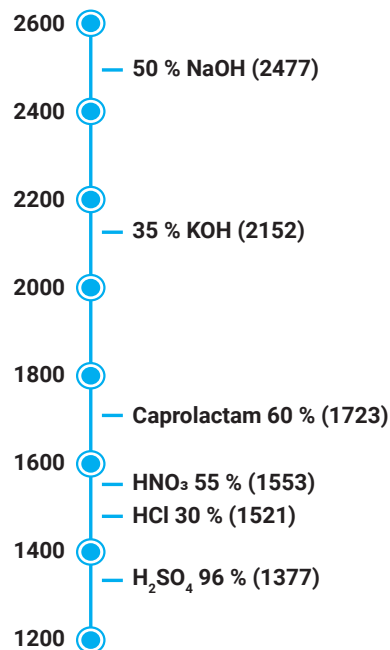
The LiquiSonic® controller 30 can be connected to 4 sensors. So it is possible to monitor several measuring points at the same time.

Alternatively measurements of samples with the LiquiSonic® Lab System are possible within minutes.

Possible measuring range (depending on the liquid):

- Concentration range: 0 to 100 wt%
- Temperature range: -20 to 140 °C / -4 to 284 °F

### sonic velocity [m/s]



**SensoTech GmbH**  
Steinfeldstraße 1  
39179 Magdeburg-Barleben  
Germany  
+49 39203 514 100  
info@sensotech.com  
www.sensotech.com

**SensoTech Inc.**  
69 Montgomery Street, Unit 13218  
Jersey City, NJ 07303  
USA  
+1 973 832 4575  
sales-usa@sensotech.com  
www.sensotech.com

**SensoTech (Shanghai) Co., Ltd.**  
Room 609, Bldg.1, No.778, Jingji Road.  
Pilot Free Trade Zone, 201206 Shanghai  
China  
+86 21 6485 5861  
sales-china@sensotech.com  
www.sensotechchina.com

Kontakt:

