

# LiquiSonic® Questionnaire

Continuous concentration monitoring with sonic velocity

company	_____	zip code, city	_____
industry	_____	state, country	_____
name	_____	phone	_____
department	_____	e-mail	_____
street	_____		
P.O. box	_____		

Please fill in all parameters marked with \*. Other desired parameters please fill in as far as possible.  
If there is no requirement in a particular parameter, please leave the corresponding field free.

liquid components	measuring component	carrier component	3rd component
name*			
formular			
CAS-number* for lab tests			
measuring range*			
unit*			
desired accuracy			

Impurities:

Please describe:

operating temperature*:	from _____ to _____	unit:
design temperature*:	from _____ to _____	unit:
ambient temperature*:	from _____ to _____	unit:
pressure:	from _____ to _____	unit:

Do gas bubbles appear?\*

Do solids exist in the liquid?\*



Installation point of sensor:

Ex zone classification:

(e.g. IECEx II 1/2 G Ex d IIC T1 – T6 Ga/Gb or FM Cl.I Div.1 Group A,B,C,D T6)

IP / Nema rating:

installation point of controller:

electrical outputs:

- 4-20 mA
- fieldbus
- modbus

cable:

cable length between sensor and controller:

sensor material:

pipe

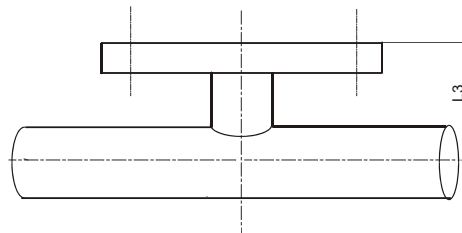
size:  DN in mm \_\_\_\_\_  ANSI in inch \_\_\_\_\_  
flange:  DN in mm \_\_\_\_\_  ANSI in inch \_\_\_\_\_

pigging:

heat tracing:

Please define L3:

(L3 = top edge to middle of pipe)



vessel / tank

heating coat:

height / diameter:

agitator:

measuring task (detailed, e.g. with drawing):

Sensotech GmbH · Steinfeldstr. 1 · 39179 Magdeburg-Barleben · Germany  
T +49 39203 514 100 · F +49 39203 514 109 · info@sensotech.com · www.sensotech.com

Sensotech Inc. · 1341 Hamburg Tpk. · Wayne, NJ 07470 · USA  
T +1 973 832 4575 · F +1 973 832 4576 · sales-usa@sensotech.com

Sensotech (Shanghai) Co., Ltd. · No. 35, Rijing Road, 200131 Shanghai · China  
T +86 21 6485 5861 · F +86 21 6495 3880 · sales-china@sensotech.com

LSM012\_01\_15