



LiquiSonic® 问卷调查

Continuous determination of the concentration by ultrasonic
通过超声波技术对浓度的持续测量分析

company 公司	_____
industry 行业	_____
name 姓名	_____
department 部门	_____
street 地址	_____
zip code, city	_____
state, country	_____
phone 电话	_____
e-mail 邮件	_____



Please fill in all parameters marked with *. Other desired parameters please fill in as far as possible.
 If there is no requirement in a particular parameter, please leave the corresponding field free. 下表中带*的必填.

liquid components 液体成分	measuring component 测量成分	carrier component 载体成分	3rd component 其他成分
name 名称			
Formular 表达式			
CAS-number* for lab tests 实验室测量的 CAS 号*			
measuring range* 测量范围*			
unit* 单位*			
desired accuracy 期望精度			

Impurities 杂质:

Please describe 请描述:

operating temperature* 工作温度*: from 从 _____ to 到 _____ unit 单位

design temperature* 设计温度*: from 从 _____ to 到 _____ unit 单位

ambient temperature* 环境温度*: from 从 _____ to 到 _____ unit 单位

pressure 压力: from 从 _____ to 到 _____ unit 单位

Do gas bubbles appear?* 有气泡出现吗?*

Do solids exist in the liquid?* 有固体在液体中出现吗?*

installation point of sensor 传感器的安装位置:

Ex zone classification 防爆等级及区域划分:

IP / Nema rating IP 防护等级:

installation point of controller 控制器的安装位置:

electrical outputs 电器输出: 4-20 mA
 fieldbus
 modbus

cable 线缆:

cable length between sensor and controller 传感器和控制器之间线缆的长度:

sensor material 传感器材质:



pipe 管道

size 尺寸: DN in mm _____ ANSI in inch _____

flange 法兰: DN in mm _____ ANSI in inch _____

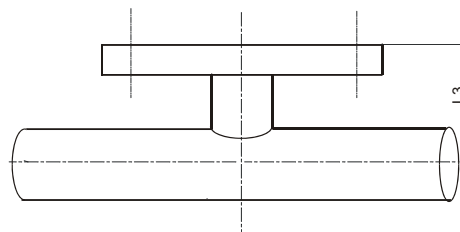
pigging 清管:

heat tracing 热跟踪:

Please define L3 请定义 L3:

(L3 = top edge to middle of pipe)

(L3=最顶部到管子中间的距离)



vessel / tank 容器/池子

heating coat 加热层:

height / diameter 高度/直径:

agitator 搅拌器:

measuring task (detailed, e.g. with drawing) 测量任务(细节, 比如图形表示):